

パズルの 答え

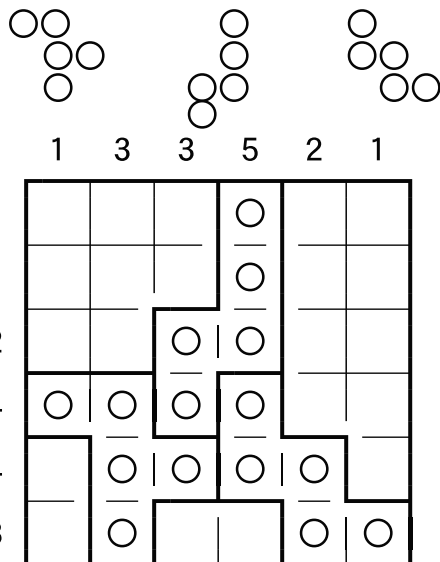


脳トレクラブ 出典

丸数字足し算パズル 1

$$\begin{array}{cccc}
 \textcircled{1} + \textcircled{1} + \textcircled{1} + \textcircled{1} & = & \textcircled{4} \\
 + & + & + & + \\
 \textcircled{2} + \textcircled{1} + \textcircled{1} + \textcircled{1} & = & \textcircled{5} \\
 + & + & + & + \\
 \textcircled{2} + \textcircled{1} + \textcircled{2} + \textcircled{1} & = & \textcircled{6} \\
 + & + & + & + \\
 \textcircled{2} + \textcircled{2} + \textcircled{2} + \textcircled{2} & = & \textcircled{8} \\
 = & = & = & = \\
 \textcircled{7} & \textcircled{5} & \textcircled{6} & \textcircled{5}
 \end{array}$$

丸ペンミノの配置 1



ことば・計算式クロス 1

$$\begin{array}{ccc}
 \boxed{\text{イ}1} + \boxed{\text{ク}3} + \boxed{\text{ラ}4} = 8 \\
 \times \quad + \quad \times \\
 \boxed{\text{ビ}7} + \boxed{\text{ジ}6} + \boxed{\text{ン}5} = 18 \\
 \times \quad + \quad \times \\
 \boxed{\text{キ}2} \times \boxed{\text{ラ}4} \times \boxed{\text{ク}3} = 24 \\
 =14 \quad =13 \quad =60
 \end{array}$$

2種類のペンミノ 1

